

LED Trackspot , trackFFECT 5 white 33W 25° 2500-7000K/RGB CRI90 TB40378.00.55.69



MASTERDATA

Item type	Product
GTIN	4058486349621
Manufacturer number	TB40378.00.55.69
Model	TRACKFFECT 5
Content unit	Piece
Order unit	Piece
Content quantity	1 Piece
Price quantity	1
Min. order quantity	1 Piece
Order step	1 Piece
Country of origin	de
Customs tariff number	94051098

DESCRIPTION

Classic elegant LED trackspot with vertical control gear for sophisticated biorhythmic lighting solutions. High transmission protective glass. Highly efficient, segmented reflector. Rotating range 355° | Tilting range 180°. Colour temperature alongside the Planck curve. Individual selection at all RGB colours within the PI-LED colour space. Colour tolerance 4 SDCM, constantly high energy efficiency from warmwhite to coolwhite. Lumen maintenance after 50.000h L80/B10. Universal track adaptor. Integrated, dimmable control gear. 5 Years warranty.

FEATURES

ETIM-7.0: Downlight/spot/floodlight (EC001744)

Suitable for surface mounting	No
Suitable for built-in mounting	No
Suitable for wall mounting	No
Suitable for suspended mounting	No
Suitable for ceiling mounting	Yes
Suitable for traverse mounting	No
Suitable for pedestal/floor mounting	No

Suitable for light-track mounting	Yes
Suitable for clamp-mounting	No
Suitable for low voltage cable system	No
Adjustability	Rotating and swivelling
With movement sensor	No
With light sensor	No
Lamp type	LED not exchangeable
With light source	Yes
Suitable for number of lamps	1
Lamp holder	None
Material housing	Aluminium
Surface protection	Powder coating
Colour housing	White
Material cover	Glass transparent
Surface brushed	No
Voltage type	AC
Nominal voltage	220 - 240 V
LED nominal current at constant current	-
Type of control gear	LED operating device voltage-controlled
Control gear included	Yes
Dimming depending on control gear	No
Dimming 0-10 V	No
Dimming 1-10 V	No
Dimming DALI	No
Dimming DMX	No
Dimming DSI	No
Dimming potentiometer (integrated)	No
Dimming GPRS	No
Dimming LineSwitch	No
Dimming manufacturer's proprietary system	No
Dimming mains voltage modulation	No
Dimming phase cut-off	No

Dimming phase cut-on	No
Dimming programmable	Yes
Dimming RF	No
Dimming Sine Wave Reduction	No
Dimming Touch and Dim	No
Dimming Zigbee	No
Dimming with push-button	No
No dim function	No
Reflector	Matt
Light distributor	Reflector
Light sharing	Symmetric
Beam angle	Medium beam 21-40°
Light outlet	Direct
Energy efficiency class of the built-in lamp	A++, A+, A (LED)
Energy efficiency class of the provided exchangeable built-in lamp	-
Highest energy efficiency class of the exchangeable lamp	-
Lowest energy efficiency class of the exchangeable lamp	-
Power supply energy efficiency index (EEI)	-
Total harmonic distortion	-
Rated life time L70/B10 at 25 °C	-
Rated life time L70/B50 at 25 °C	-
Rated life time L80/B10 at 25 °C	50000 h
Rated life time L80/B50 at 25 °C	-
Rated life time L90/B10 at 25 °C	-
Rated life time L90/B50 at 25 °C	-
Degree of protection (IP)	IP20
Degree of protection (NEMA)	-
Impact strength	-
Protection class	I
Rated ambient temperature acc. IEC62722-2-1	10 - 35 °C

Suitable for lamp power	-
Max. system power	33 W
Colour of light	Multi colour
Colour temperature	2500 - 7000 K
Colour rendering index CRI	90-100
Luminous flux	2450 - 2450 lm
Rated luminous flux acc. IEC 62722-2-1	-
Lamp efficacy	-
Luminous intensity	-
Power factor	0.9
Width	120 mm
Height/depth	230 mm
Length	-
Outer diameter	90 mm
Built-in width	-
Built-in height/depth	-
Built-in length	-
Built-in diameter	-
Type of wiring	Ending
Number of poles	-
Conductor cross section	0.5 mm ²
Connectable conductor cross section	-
Connection type	Other
Luminaire with limited surface temperature, sign "D"	No
Luminaire efficacy	74 lm/W
Fit for monitor workplace acc. EN 12464-1	No
Covering of the luminaire with thermally insulating material possible	-
Filament test according to IEC 60695-2-11	None
Photobiological safety according to EN 62471	RG1
Colour consistency (McAdam ellipse)	SDCM4

RELATED ITEMS

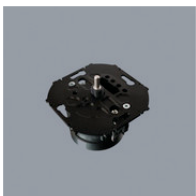
Accessory



AA1100157
Wall Control recessed for FFECT Program
AA1100157



AA1100158
Wall Control recessed for FFECT Program
AA1100158



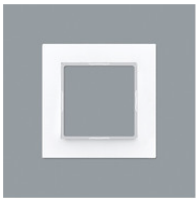
AA1100159
Wall Control recessed for FFECT Program
AA1100159



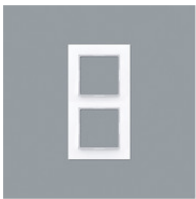
AA1100160
Wall Control recessed for FFECT Program
AA1100160



AA1100161
Central Plate with Rotary Knob for FFECT Program
AA1100161



AA1100162
Single Surface Frame for FFECT Program
AA1100162



AA1100163
Double Surface Frame for FFECT Program
AA1100163



AA1100155
NeoLink Box and App for FFECT Program
AA1100155



AA1100156
USB Stick myPI-LED for FFECT Program
AA1100156



AA1100164
DALI CDC for FFECT Program
AA1100164



AA1100165
DALI Sequencer for FFECT Program
AA1100165



AA1100166
USB Stick + Interface Module for FFECT Program
AA1100166



AA1100167
DALI PS1 for FFECT Program
AA1100167



AA1100168
DALI PS2 for FFECT Program
AA1100168



AA1100170
DALI Touch Panel for FFECT Program
AA1100170



AA1100169
DALI Display 7" for FFECT Program
AA1100169